

Type CHM Raintight Conduit Hubs

For RMC and IMC

NEC/CEC — Suitable for use in:
Class I, Division 2

Applications

- General purpose fitting.

Features

- Type CHM only table and references.

Material/Finish

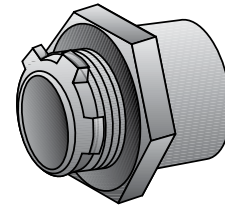
- Malleable iron/zinc electroplate
- Gasket: neoprene

Options

- P/U for OZG

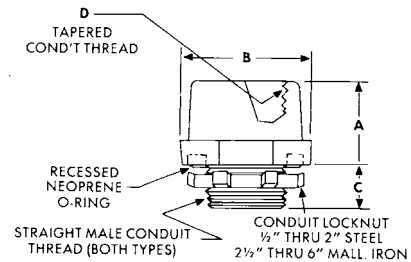
NEC/CEC Certifications and Compliances

- UL Standard: 514B
- UL Listed: E-11853
- CSA Standard: C22.2 No. 18.3
- CSA Certified: 065178
- NEMA: FB-1



Type CHM

Illustrated Dimensions



Trade Size (Inches)	Dimensions in Millimeters (Inches)				Max. Box Wall Thk.	Catalog Number	Insulated Throat Catalog Number
	A	B	C	D Female Tapered N.P.T.			
1/2	22.4 (0.88)	38.1 (1.5)	12.7 (0.50)	12.7 (0.50) - 355.6 (14.00)	7.9 (0.31)	CHM-50	CHM-50T
3/4	25.4 (1.00)	44.5 (1.75)	12.7 (0.50)	19.1 (0.75) - 355.6 (14.00)	9.7 (0.38)	CHM-75	CHM-75T
1	28.7 (1.13)	50.8 (2.00)	16.0 (0.63)	25.4 (1.00) - 292.1 (11.50)	11.2 (0.44)	CHM-100	CHM-100T
1-1/4	31.8 (1.25)	60.5 (2.38)	16.0 (0.63)	31.8 (1.25) - 292.1 (11.50)	11.9 (0.47)	CHM-125	CHM-125T
1-1/2	31.8 (1.25)	69.9 (2.75)	16.0 (0.63)	38.1 (1.50) - 292.1 (11.50)	11.9 (0.47)	CHM-150	CHM-150T
2	31.8 (1.25)	82.6 (3.25)	19.1 (0.75)	50.8 (2.00) - 292.1 (11.50)	12.7 (0.5)	CHM-200	CHM-200T
2-1/2	41.4 (1.63)	98.6 (3.88)	25.4 (1.00)	63.5 (2.50) - 203.2 (8.00)	14.2 (0.56)	CHM-250	CHM-250T
3	44.5 (1.75)	117.6 (4.63)	25.4 (1.00)	76.2 (3.00) - 203.2 (8.00)	16.0 (0.63)	CHM-300	CHM-300T
3-1/2	47.8 (1.88)	130.3 (5.13)	28.7 (1.13)	88.9 (3.50) - 203.2 (8.00)	16.0 (0.63)	CHM-350	CHM-350T
4	47.8 (1.88)	143.0 (5.63)	28.7 (1.13)	101.6 (4.00) - 203.2 (8.00)	17.5 (0.69)	CHM-400	CHM-400T
5	54.1 (2.13)	174.8 (6.88)	31.8 (1.25)	127.0 (5.00) - 203.2 (8.00)	17.5 (0.69)	CHM-500	CHM-500T
6	54.1 (2.13)	206.5 (8.13)	31.8 (1.25)	152.4 (6.00) - 203.2 (8.00)	17.5 (0.69)	CHM-600	CHM-600T

OZ/GEDNEY™

COMMERCIAL AND INDUSTRIAL FITTINGS, RIGID AND IMC CONDUIT FITTINGS